

Maya glyphs at the top of the page.

Grid of 16 columns and 10 rows of small circular glyphs.



Grid of 4 columns and 3 rows of larger glyphs.

Complex grid of glyphs with vertical bars and dots, possibly a calendar or astronomical table.



Grid of 4 columns and 2 rows of larger glyphs.

Complex grid of glyphs with vertical bars and dots, similar to the middle section.



Four vertical columns of stylized pictographs or ideograms, likely representing a form of ancient script. The symbols are arranged in a regular grid and include various human faces, abstract shapes, and symbols resembling numbers or specific objects.

Two horizontal lines of stylized pictographs at the top right of the page.



Two horizontal lines of stylized pictographs located below the first illustration, continuing the sequence of symbols.



A section of symbols including horizontal lines, dots, and fish-like shapes, possibly representing a specific set of characters or a decorative element.

Four vertical columns of stylized pictographs, similar to the first section, located in the lower left quadrant of the page.

Two horizontal lines of stylized pictographs located below the second illustration.



Mayan hieroglyphs at the top right of the page.



Two rows of Mayan hieroglyphs located below the first illustration.



Two rows of Mayan hieroglyphs located below the second illustration.



A large column of Mayan hieroglyphs on the left side of the page, including various symbols and signs.

Red markings and symbols at the bottom left of the page.

Grid of 20 columns and 15 rows of Mayan glyphs. The glyphs are arranged in a regular pattern, with some variations in size and color (red and black). The text is written in a vertical columnar format, typical of Mayan script.

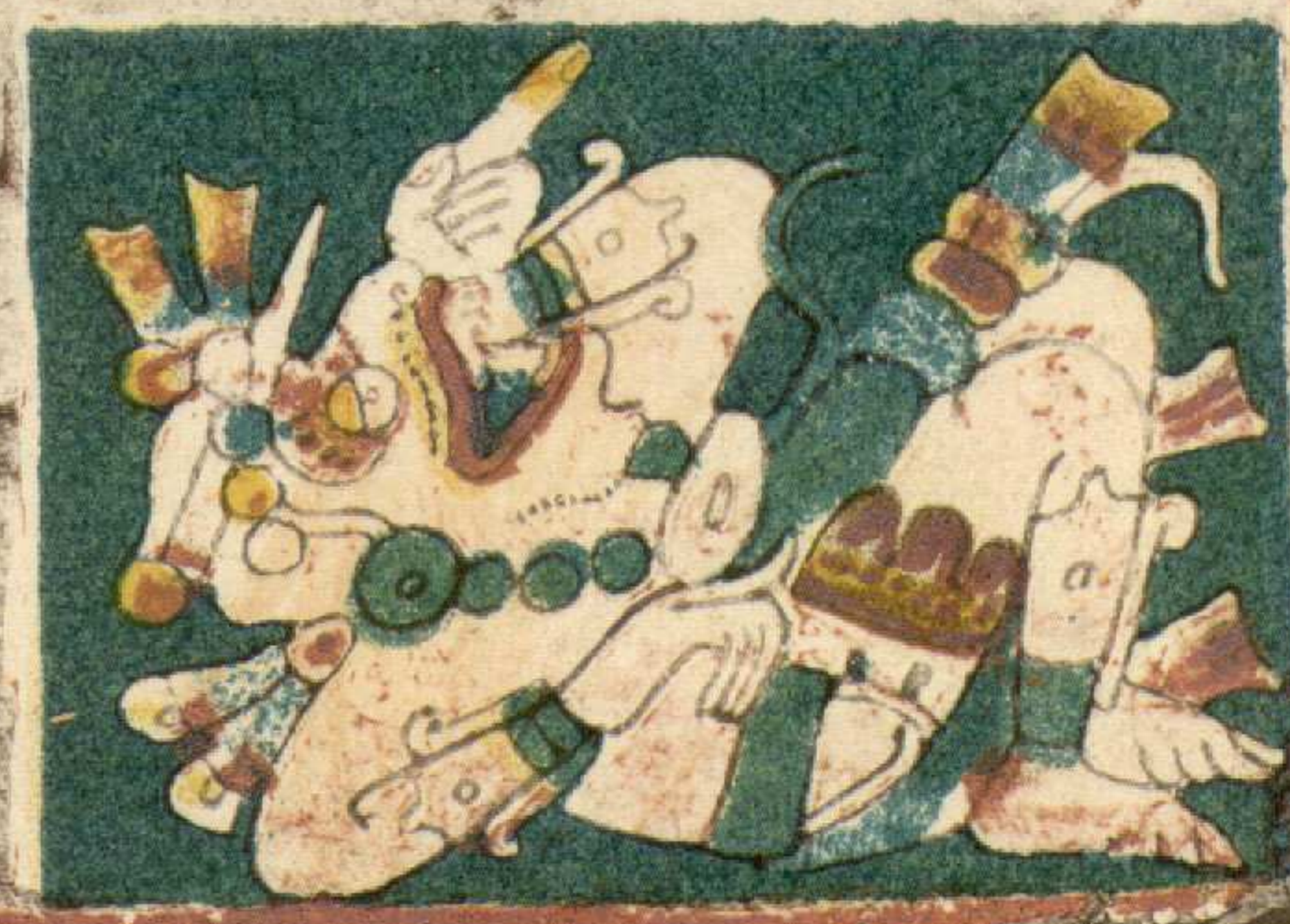
Two horizontal lines of Mayan glyphs, likely serving as a header or title for the page.



Two horizontal lines of Mayan glyphs, continuing the text from the left side of the page.

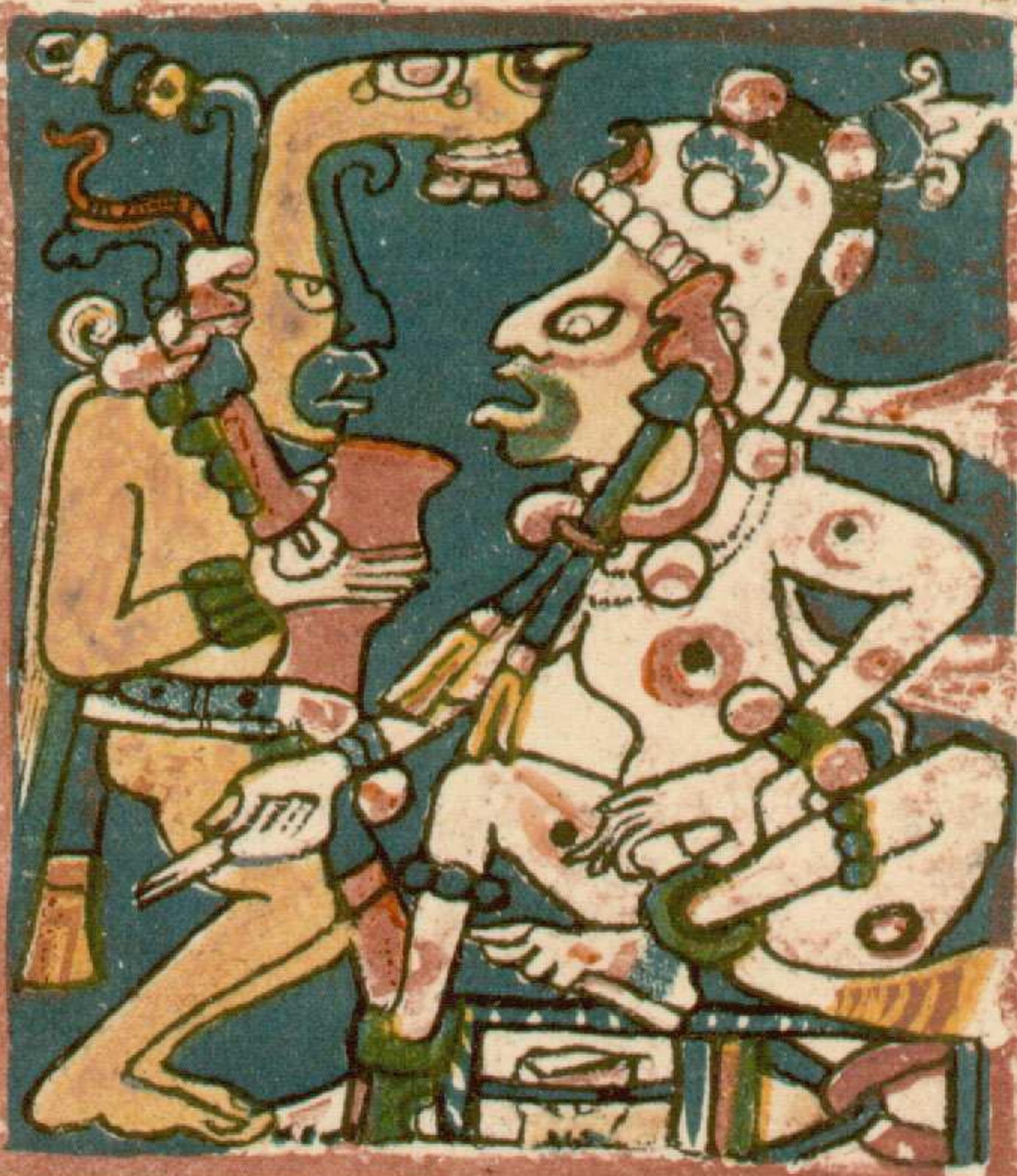


Two horizontal lines of Mayan glyphs, continuing the text from the left side of the page.



Red and black markings at the bottom of the page, possibly representing a signature or a date.

Mayan hieroglyphs in the top right corner, arranged in two columns.



Mayan hieroglyphs in the middle right section, arranged in two columns.



Mayan hieroglyphs in the lower middle right section, arranged in two columns.



A large block of Mayan hieroglyphs on the left side of the page, organized into several vertical columns. The glyphs include various symbols, including faces, geometric shapes, and abstract forms. Some glyphs are accompanied by red dots or lines.